



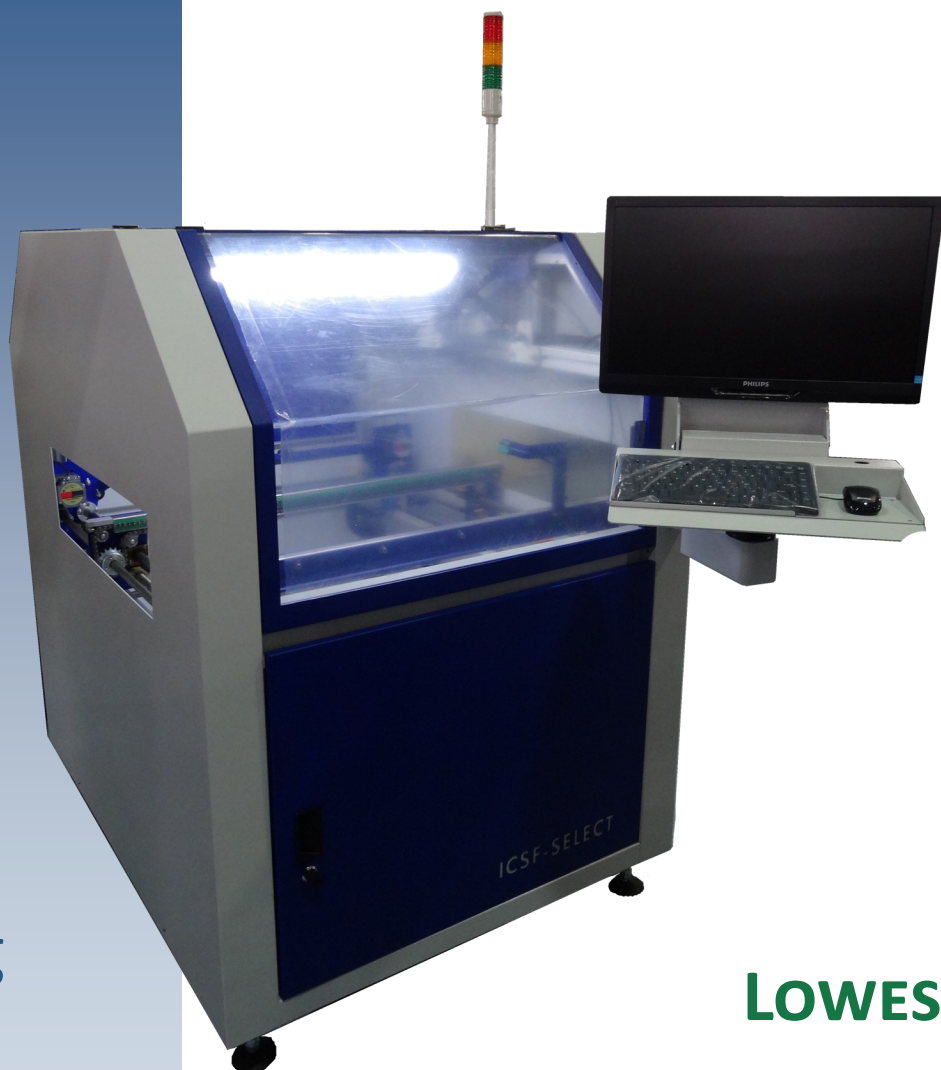
**INTERFLUX**®  
ELECTRONICS

**MICRO DROP FLUXING**

# ICSF-SELECT

The NEW  
Evolution  
of  
Fluxing

Selective fluxing  
made for  
WAVE SOLDERING



**LOWEST**  
Flux Consumption

**SHORTEST**  
Cycle Time

**ICSF-SELECT**



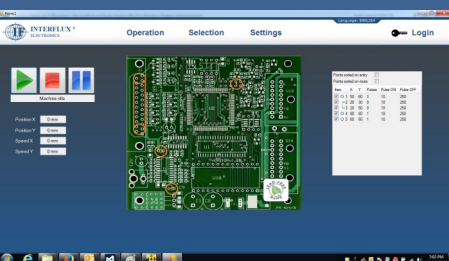
a division of Interflux®



**INTERFLUX®**  
ELECTRONICS

# SPECIFICATIONS

Easy  
Programming



Board Detection  
on the fly



Accessible



**ICSF-SELECT**

## Specifications

	ICSF-Select-610	ICSF-Select-410
<b>Nozzles</b>	One Micro Drop (optional 2)	One Micro Drop (optional 2)
<b>Nozzle Movement</b>	Servo, max speed 1000mm/s	Servo, max speed 1000mm/s
<b>Nozzle Movement Area</b>	610 by 610mm	410 by 410mm
<b>Flux pump</b>	Pump with brushless DC motor	Pump with brushless DC motor
<b>Flux Drop Control</b>	High speed solenoid valve, Minimum Pulse 2ms	High speed solenoid valve, Minimum Pulse 2ms
<b>Flux Flow Control</b>	Flux pump with feedback	Flux pump with feedback
<b>Power Supply</b>	VAC, 50/60 Hz, 700W	VAC, 50/60 Hz, 700W
<b>PCB position sensor</b>	Ultrasonic	Ultrasonic
<b>Outgoing PCB sensor</b>	Photo electric	Photo electric
<b>Incoming PCB sensor</b>	Photo electric	Photo electric
<b>Conveyor Speed Control</b>	Encoder with conveyor speed Calibration + stepper motor, 0.1 to 3 m/min	Encoder with conveyor speed Calibration + stepper motor, 0.1 to 3 m/min
<b>Conveyor width control (= PCB Width setting)</b>	Stepper motor with limit switches	Stepper motor with limit switches
<b>Flux Low Level switch</b>	Yes (optional 2)	Yes (optional 2)
<b>No of flux supply modules</b>	One (optional 2)	One (optional 2)
<b>Emergency stop</b>	Yes (2 locations)	Yes (2 locations)
<b>Tower light</b>	Yes (3 colours)	Yes (3 colours)
<b>Controls</b>	PC	PC
<b>Flux Drop settings</b>	PC	PC
<b>Drop cycle settings</b>	PC	PC
<b>Progammig</b>	PC	PC
<b>Modes of operation</b>	Selective	Selective
<b>Selective selection</b>	PCB Picture on PC	PCB Picture on PC
<b>Recipes</b>	Unlimited	Unlimited
<b>Alarms &amp; Events</b>	Yes	Yes
<b>Conveyor</b>	3 mm pin conveyor	3 mm pin conveyor
<b>SMEMA handshake</b>	Yes	Yes
<b>Trending &amp; data logging</b>	Optional	Optional
<b>Operator security</b>	Yes (multiple levels)	Yes (multiple levels)
<b>Flux Tank</b>	Yes, with low level alarm	Yes, with low level alarm
<b>Barcode reader</b>	Optional	Optional
<b>Exhaust Diameter</b>	100 mm	100 mm
<b>Exhaust Volume</b>	150 m³/h	150 m³/h
<b>Flux Droplet Control</b>	Optional	Optional

## Dimensions

<b>Stand Alone</b>	L : 1000, W : 1150, H : 1372 mm	L : 800, W : 1150, H : 1372 mm
--------------------	---------------------------------	--------------------------------

**Interflux Singapore Pte Ltd**

2 Kallang Pudding Road

#04-12 Mactech Building

Singapore 349307

Email : enquiry@interflux.com.sg

**Distributor :**